



Survey on the Long-Term Impacts  
of Liberal Education on Religious  
Studies Majors

**2015 SURVEY RESULTS**



## THE 2015 AAR SURVEY REPORT

The institutional report displays aggregated results for all 35 participating colleges and universities. These institutions volunteered to take part in the survey that was administered during 2014 and Spring 2015. Please see the Survey Participation Tab for a complete list of participating institutions.

RESPONSE RATES	N	%
All Institutions	1675	33%

### Understanding the Competency Table

Competency Areas		Mean	Incr.	Same	Dec.
Understanding religion from a variety of theoretical and	Entering "E"	2.35			
	Exiting "X"	5.17	0.63	0.34	0.02

\*p<.01

Mean score rating before entering the religious studies program

Mean score rating after graduating from the religious studies program

% increased competency in area since graduating

% competency staying about the same in area since graduating

% decreased competency in area since graduating

Items with mean differences that are larger than would be expected by chance alone are noted in the competency table. The smaller the significance level, the less likely the difference is due to chance. Pairwise comparisons were used to determine differences between entering and exiting competency ratings of your alumni, not between your institution and other participating institutions. (The mean is the arithmetic average of responses on a particular item.)

### Understanding the Satisfaction Table

Satisfaction	Mean	SD
I have applied the skills I learned in religious studies to help resolve problems I've faced in my personal life.	5.19	1.090

Mean score

Standard deviation which measures the average amount the scores deviate from the mean.

## 2015 AAR Survey Findings

### Competency Areas

Survey Questions: *Before you enrolled in your undergraduate program in religious studies, how would you rate your competency level in each of the following areas?*

*Immediately after completing your undergraduate program in religious studies, how would you rate your competency level in the following areas?*

*In the time since completing your undergraduate program in religious studies, has your competency level in each of the following areas increased, stayed about the same, or decreased in the following areas?*

*Note.* E = "Entering" and X= "Exiting" (Mean range: 1= very weak competency to 6=very strong competency)

Survey Items		Mean *	All Institutions		
			Incr.	Same	Dec.
Understanding religion from a variety of theoretical and methodological approaches (e.g., historical, sociological)	E	2.41			
	X	4.99	56.5%	34.9%	8.6%
Understanding of two or more religious traditions	E	2.94			
	X	5.22	65.17%	30.22%	4.6%
Understanding of religious phenomena within U.S. culture	E	2.75			
	X	4.84	65.29%	31.65%	3.1%
Understanding the diversity of religious beliefs in U.S. culture	E	2.96			
	X	4.92	67.83%	29.88%	2.3%
Understanding of religious beliefs within a global context	E	2.67			
	X	4.95	68.97%	27.6%	3.4%
Reflecting critically on one's self (e.g., one's own beliefs, practices, values)	E	3.63			
	X	5.34	75.98%	21.74%	2.3%
Working effectively with individuals who are culturally different than you	E	3.55			
	X	5.03	73.25%	25.19%	1.6%
Examining issues about social and ethical responsibility	E	3.38			
	X	5.14	73.3%	25.4%	1.3%
Using your knowledge of religion to understand current events	E	2.98			
	X	5.10	69.4%	28.2%	2.4%
Using your knowledge of religion to understand historical events	E	2.96			
	X	5.13	63%	33%	4%
Writing clearly and effectively	E	3.87			
	X	5.27	68.2%	28.1%	3.7%
Speaking clearly and effectively	E	3.82			
	X	5.16	71%	26.8%	2.2%

\*p<.000

## 2015 AAR Survey Findings

### Satisfaction

Survey Question: *Please rate the extent to which you disagree or agree with the following:*

(Mean range: 1=strongly disagree to 6=strongly agree) (SD) = standard deviation

Survey Items	All Institutions	
	Mean	SD
My education in religious studies has made a positive contribution to the quality of my life.	5.42	0.95
I have applied the skills I learned in religious studies to help resolve problems I've faced in my personal life.	4.86	1.25
Overall, I was satisfied with my degree program in religious studies.	5.25	1.06
If I had it to do over again, I would choose religious studies as my undergraduate major.	4.73	1.53

### Volunteer Work

	All Institutions N = 1649	
	Yes	No
During the last 12 months, have you participated in volunteer work or community service activities?	81.2%	18.8%

## 2015 AAR Survey Findings

### All Institutions

#### Frequencies

*Competency level before enrolling in a religious studies program and competency level after completing the degree.*

*Note. E = "Entering" and X= "Exiting"*

		Very weak competency	2	3	4	5	Very strong Competency	N
Understanding religion from a variety of theoretical and methodological approaches (e.g., historical, sociological)	E	26.3%	34.4%	20.1%	12.5%	4.4%	2.3%	1667
	X	0.1%	0.8%	4.4%	20.3%	43.7%	30.7%	1669
Understanding of two or more religious traditions	E	17.2%	25.2%	23.6%	19.2%	10%	4.7%	1672
	X	0.2%	1%	4.2%	12.9%	34.6%	47.1%	1663
Understanding of religious phenomena within U.S. Culture	E	15.2%	31.3%	27.9%	16.9%	6.7%	2%	1653
	X	0.5%	1.7%	7.2%	22.7%	38.7%	29.1%	1658
Understanding the diversity of religious beliefs in U.S. culture	E	12.2%	27.9%	27.3%	20%	9.3%	3.3%	1661
	X	0.4%	1.8%	6.8%	19.6%	38.8%	32.6%	1660
Understanding of religious beliefs within a global context	E	18.6%	32.3%	24.3%	16.3%	5.6%	2.9%	1655
	X	0.3%	1.7%	6.2%	19.6%	39.6%	32.6%	1661
Reflecting critically on one's self (e.g., one's own beliefs, practices, values)	E	5.7%	16.2%	25.3%	24.7%	17.7%	10.3%	1657
	X	0.1%	0.9%	2.2%	11%	33.6%	52.2%	1662
Working effectively with individuals who are culturally different than you	E	8.8%	16.9%	22.9%	22.8%	18.6%	10%	1664
	X	0.5%	1.4%	5.8%	17.7%	36.2%	38.5%	1664
Examining issues about social and ethical responsibility	E	6.2%	19.7%	27.7%	28%	12.9%	5.5%	1662
	X	0.1%	0.7%	3.8%	15%	41.1%	39.3%	1663
Using your knowledge of religion to understand current events	E	12.4%	26.3%	28.9%	19.2%	9.1%	4.1%	1665
	X	0.2%	1%	4.3%	16.5%	39.2%	38.7%	1662
Using your knowledge of religion to understand historical events	E	12.5%	27.4%	28%	19.9%	8.3%	3.9%	1659
	X	0.2%	0.8%	3.7%	15.3%	40.8%	39.3%	1656
Writing clearly and effectively	E	3.6%	12.9%	23.4%	26.2%	21.6%	12.4%	1659
	X	0.2%	0.4%	2.5%	11.9%	39.2%	45.9%	1659
Speaking clearly and effectively	E	3%	13.1%	25.2%	27%	20.9%	10.9%	1664
	X	0.1%	0.5%	4.2%	15%	39%	41.2%	1660

*Please rate the extent to which you disagree or agree with the following:*

	Strongly disagree	2	3	4	5	Strongly agree	N
My education in religious studies has made a positive contribution to the quality of my life.	0.8%	1.3%	2.3%	9.7%	22.1%	63.8%	1672
I have applied skills I learned in religious studies to help resolve problems I've faced in my personal life.	1.6%	5%	7.2%	19%	26.6%	40.6%	1671
Overall, I was satisfied with my degree program in religious studies.	1%	2.8%	3.2%	10.4%	28.3%	54.3%	1660
If I had it to do over again, I would choose religious studies as my undergraduate major.	5.2%	7.5%	8.3%	13.3%	19.6%	46%	1649

**Additional Majors****All Institutions****N = 1652**

	Yes	No
<i>Did you have an additional major (double major) as an undergraduate?</i>	48.0%	52.0%

*What was your additional major?*

Accounting  
 Agriculture  
 American Studies (2 responses)  
 Anthropology (28 responses)  
 Art (10 responses)  
 Art History (6 responses)  
 Asian Studies (4 responses)  
 Aviation Science and Administration  
 Biblical Studies (3 responses)  
 Biology (29 responses)  
 Biomedical Sciences (2 responses)  
 Business Administration (10 responses)  
 Chemistry (4 responses)  
 Chinese History, Language, Literature (2 responses)  
 Church Music  
 Classical Studies (6 responses)  
 Communication (53 responses)  
 Computer Information Systems (2 responses)  
 Computer Science (3 responses)  
 Criminal Justice (2 responses)  
 Dance (3 responses)  
 East Asian Studies (2 responses)  
 Economics (10 responses)  
 Education (17 responses)  
 English (98 responses)  
 Environmental Studies (4 responses)  
 Ethics  
 Family and Community Services  
 Finance  
 Fitness Management  
 French (4 responses)  
 French Literature  
 General Science  
 Geography (2 responses)  
 German (5 responses)

## 2015 AAR Survey Findings

German Literature  
Graphic Design  
Greek (4 responses)  
Health Sciences (2 responses)  
History (94 responses)  
Human Rights (2 responses)  
Humanities (3 responses)  
Interdepartmental Studies  
International Development (3 responses)  
International Studies (7 responses)  
Japanese Language  
Latin (2 responses)  
Legal Studies  
Leisure Services  
Liberal Studies  
Linguistics (2 responses)  
Mathematics (11 responses)  
Mechanical & Aerospace Engineering  
Middle Eastern Studies (2 responses)  
Multicultural and Gender Studies  
Music (12 responses)  
Nursing (2 responses)  
Philosophy (84 responses)  
Physics (3 responses)  
Political Science (52 responses)  
Psychology (73 responses)  
Recreation  
Social Sciences (3 responses)  
Social Work (13 responses)  
Sociology (31 responses)  
Spanish (9 responses)  
Sports Management  
Telecommunications Management  
Urban Studies (2 responses)  
Wilderness Recreation  
Women's Studies (5 responses)

## 2015 AAR Survey Findings

### Employment

#### All Institutions

**N = 1665**

<i>Are you currently employed?</i>	Yes	82.5%
	No	8.9%
	Not seeking employment	8.6%
<i>Have you been employed at any time over the last 18 months?</i>	Yes	41.2%
	No	58.8%

### Area of Employment

*In what general area are you currently employed or were employed at any time over the last 18 months?*

#### All Institutions

**N = 1469**

Agriculture and Natural Resources	1%
Arts	3.3%
Business and Finance	8.0%
College Faculty & Administration	13.3%
Counseling & Mental Health	4.4%
Education K-12	9.6%
Government and Public Administration	3.8%
Hospitality and Tourism	3.2%
Information Systems & Technology	4.4%
Journalism & Publication	1.8%
Law	5.9%
Library Work	2.5%
Manufacturing & Construction	1.1%
Marketing	2.6%
Medicine and Nursing	5.2%
Military	0.5%
Non-Profit or Community Organization	8.7%
Religious Organization	20.3%
Transportation	0.4%

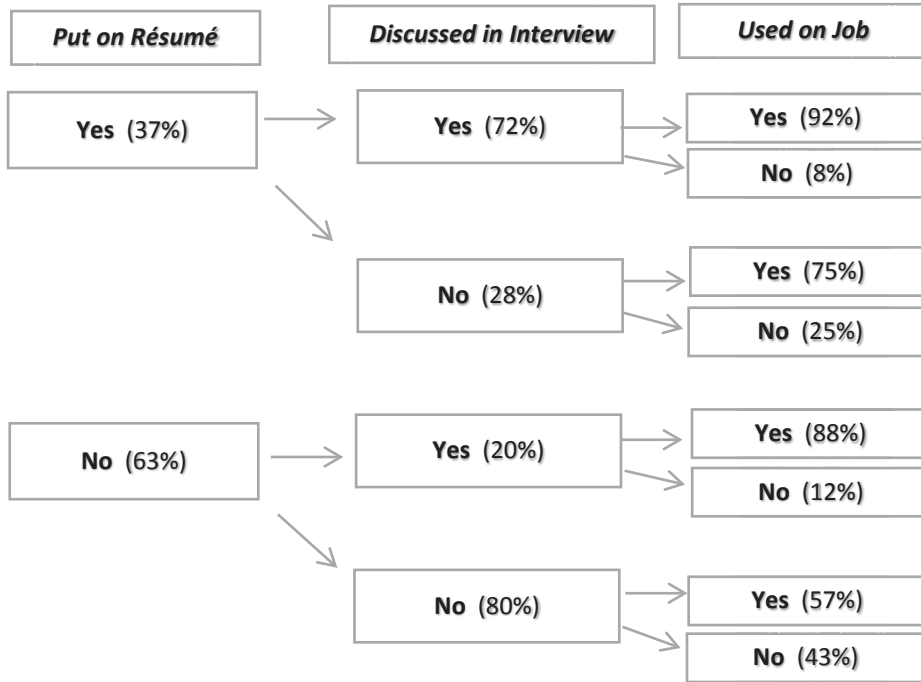


## 2015 AAR Survey Findings

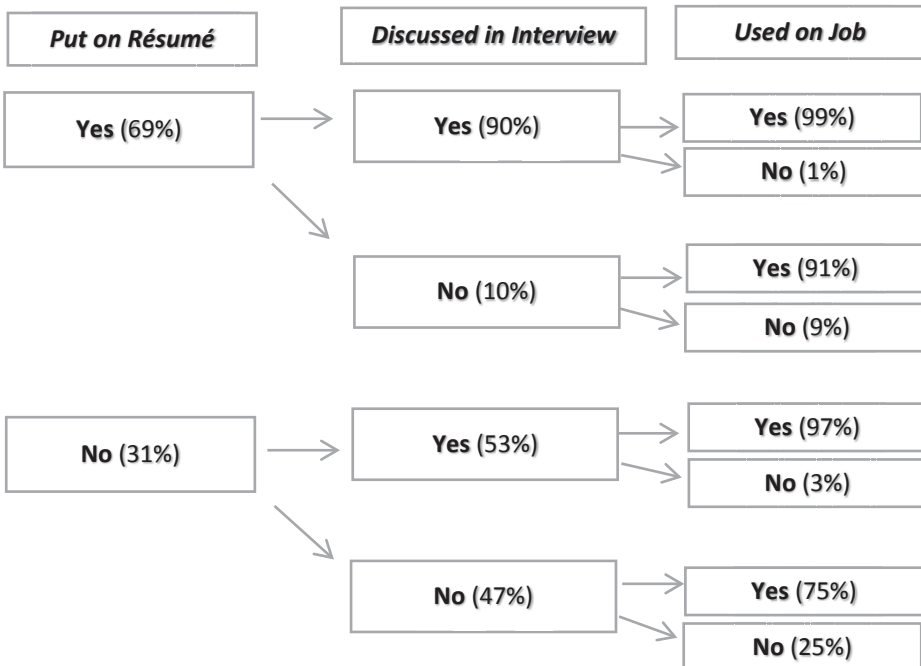
Survey Question: *Did you list the following skills you may have acquired during your undergraduate religious studi program on your résumé, discuss these skills during your job interview or use these skills in your current job?*

Note. (%) = All other participating institutions' percentage.

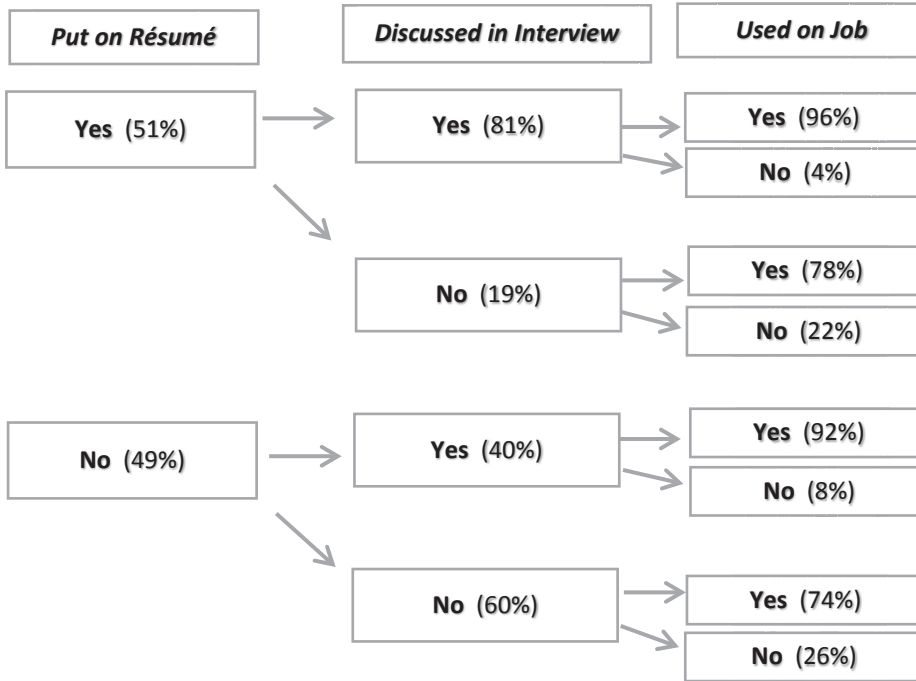
### Research Competencies



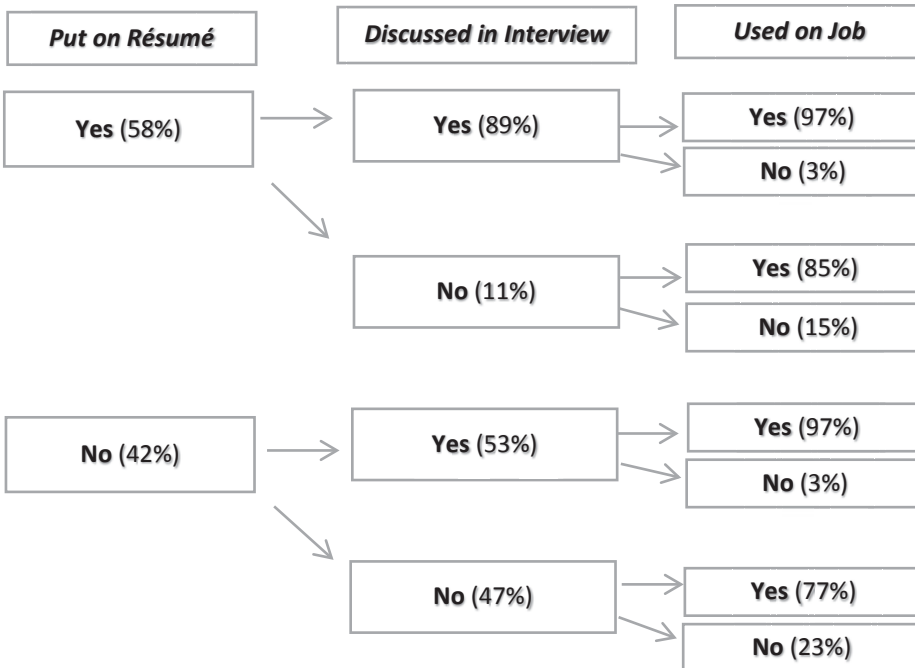
### Communication Competencies (Reading and Writing)



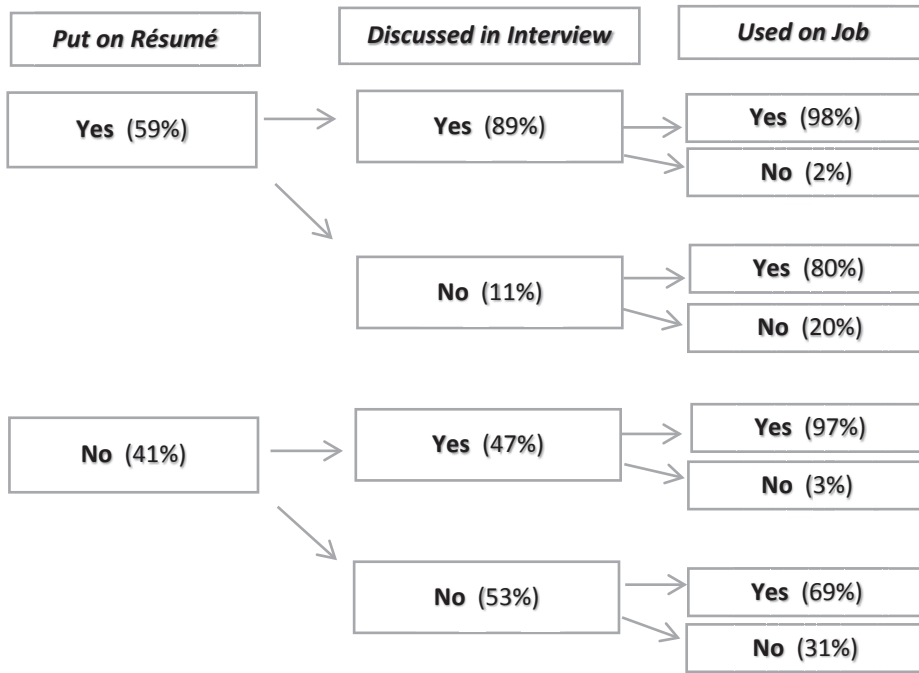
**Ability to Interpret Data/Information in a Critical Manner**



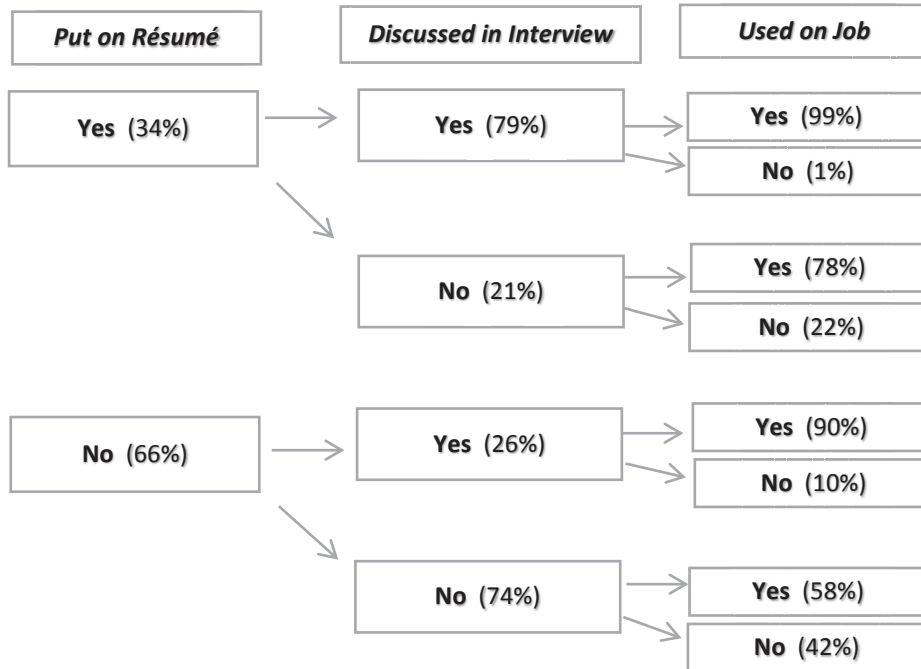
**Ability to Analyze Problems from Different Perspectives**



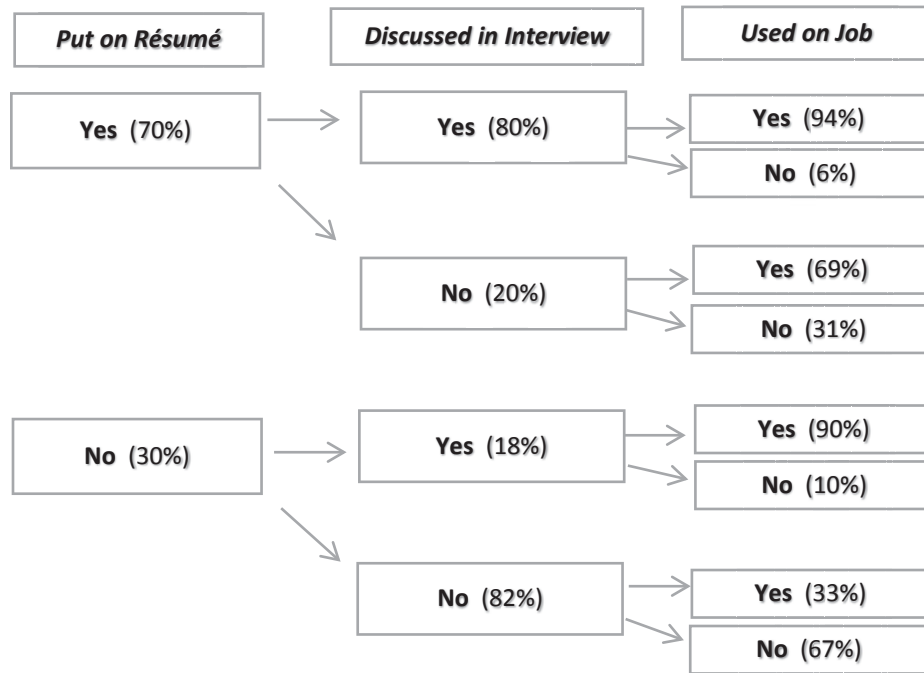
Ability to Work with Diverse Populations



Knowledge of Ethical Standards



Participation in Community Service or Charitable Projects



2015 AAR Survey Findings

**Education - Religious Studies**

**All Institutions**

**N = 1665**

<i>Are you currently enrolled in a graduate program in theology, religion, or religious studies?</i>	Yes	8.0%
	No	92.0%
<i>What degree(s) are you pursuing? (Check all that apply.)</i>		
	M.Div.	29.1%
	M.T.S.	3.0%
	M.A.	23.9%
	Ph.D.	29.9%
	Th.D.	1.5%
	Other	17.2%

*Note.* Percentages may equal more than 100.0% because of multiple selections.

**Degrees: Other**

D.Min. (13 responses)  
M.Th.

**All Institutions**

**N = 1647**

<i>Have you in the past pursued a graduate program in theology, religion, or religious studies?</i>	Yes	35.3%
	No	64.7%
<i>What degree(s) did you earn? (Check all that apply.)</i>		
	M.Div.	46.4%
	M.T.S.	6.1%
	M.A.	33.4%
	Ph.D.	8.5%
	Th.D.	0.7%
	Did not finish program.	10.4%
	Other	9.7%

*Note.* Percentages may equal more than 100.0% because of multiple selections.

**Degrees: Other**

D.Min. (31 responses)  
M.Th.  
S.T.M. (3 responses)  
B.D.

## 2015 AAR Survey Findings

### **Currently Enrolled in Post-Graduate Theology, Religion or Religious Studies Program**

*At what institution are you pursuing your degree(s)?*

Anabaptist Mennonite Biblical Seminary  
Arizona State University  
Asbury Theological Seminary  
Bethel Seminary  
Boston College (2 responses)  
Brandeis University  
Brite Divinity School  
Campbell University Divinity School  
Catholic Theological Union (3 responses)  
Church Divinity School of the Pacific  
Claremont Graduate University (4 responses)  
Columbia University  
Concordia University, Irvine  
Covenant Theological Seminary  
CSU, Long Beach  
Denver Seminary  
Drew, GDR  
Duquesne University  
Erskine Theological Seminary  
Emory University, Candler School of Theology (5 responses)  
Florida State University  
Fuller Theological Seminary (4 responses)  
Hartford Seminary  
Harvard Divinity School (6 responses)  
Hebrew College Rabbinical School  
Hebrew Union College  
Iliff School of Theology  
International Buddhist College  
IRCS, Indonesia  
La Salle University  
Liberty Baptist Theological Seminary (3 responses)  
Luther Seminary (7 responses)  
Lutheran School of Theology, Chicago  
McCormick Theological Seminary  
McGill University (2 responses)  
McMaster University  
Memorial University of Newfoundland  
Memphis Theological Seminary  
Mid-America Reformed Seminary  
Moody Theological Seminary  
Nashotah House Theological Seminary  
Notre Dame of MD University  
Princeton Theological Seminary (4 responses)

## 2015 AAR Survey Findings

Reformed Theological Seminary  
San Francisco Theological Seminary  
Santa Clara University  
Sofia University  
Southeastern Baptist Theological Seminary  
Southern Baptist Theological Seminary  
Syracuse University  
Trinity College  
Trinity Evangelical  
Trinity School for Ministry  
UC, Berkeley  
UDTS  
UNC, Chapel Hill  
Union Theological Seminary (3 responses) The University of Amsterdam  
University of Amsterdam (2 responses)  
University of Birmingham (UK)  
University of California, Santa Barbara  
University of Chicago (6 responses)  
University of Dubuque Theological Seminary  
University of Florida  
University of Iowa (2 responses)  
University of Kansas  
University of Nottingham  
University of Ottawa  
University of San Diego  
University of Toronto (3 responses)  
Victoria University of Wellington  
Wake Forest University  
Wartburg Theological Seminary (4 responses)  
Wesley Theological Seminary  
Western Michigan University  
Western Theological Seminary  
Yale Divinity School (7 responses)

### **Previously Enrolled in Post-Graduate Theology, Religion or Religious Studies Program**

*At what institution did you pursue your degree(s)?*

Alliance Theological Seminary  
Anabaptist Mennonite Biblical Seminary  
American Indian Institute  
Andersonville Theological Seminary  
Andover Newton Theological School (4 responses)  
Aquinas Institute of Theology (3 responses)  
Asbury Theological Seminary (14 responses)  
Azusa Pacific University  
Bethel Theological Seminary (3 responses)  
Bethesda Bible College

## 2015 AAR Survey Findings

Biblical Theological Seminary  
Boston College (4 responses)  
Boston University (9 responses)  
Brandeis University (2 responses)  
Brite Divinity School (4 responses)  
Carin University  
California State University, Long Beach (5 responses)  
California State University, Sacramento  
Calvin Theological Seminary  
Catholic Theological Union (2 responses)  
Catholic University (2 responses)  
Chicago Theological Seminary (3 responses)  
Christ the King Seminary  
Christian Theological Seminary (17 responses)  
Claremont Graduate University (5 responses)  
Colgate Rochester Divinity School (3 responses)  
Columbia Theological Seminary (9 responses)  
Concordia University (2 responses)  
Covenant Theological Seminary (3 responses)  
Cleveland State Community College  
Dallas Seminary  
Denver Seminary  
Drew Theological School  
Duke University (23 responses)  
Emory University, Candler School of Theology (11 responses)  
Fuller Theological Seminary (3 responses)  
Garrett Theological Seminary (5 responses)  
General Theological Seminary  
Georgia State University  
Gordon-Conwell Seminary (4 responses)  
Graduate Institute of Applied Linguistics  
Hamma School of Theology  
Harvard Divinity School (25 responses)  
Hebrew Union College (2 responses)  
Hebrew University of Jerusalem  
Heythrop College, University of London  
Holy Cross Greek Orthodox School of Theology  
Iliff School of Theology (7 responses)  
Indiana University (3 responses)  
Indiana Wesleyan University  
Jewish Theological Seminary  
John Carroll University  
Jesuit School of Theology, Berkeley  
Lancaster Theological Seminary (4 responses)  
Lee University  
Lexington Theological Seminary (10 responses)  
Liberty University



## 2015 AAR Survey Findings

Loras College  
Louisville Presbyterian Theological Seminary (7 responses)  
Loyola University (3 responses)  
Lutheran Theological Seminary, Philadelphia  
Luther Seminary (19 responses)  
Luther Northwestern Seminary  
Lutheran School of Theology (78 responses)  
Lutheran Theological Seminary at Gettysburg (3 responses)  
Lutheran Theological Seminary of Hong Kong  
Lutheran Theological Southern Seminary (5 responses)  
Western Michigan University  
McCormick Theological Seminary (3 responses)  
McGill University (12 responses)  
Montreal Diocesan Theological Seminary  
Miami University (2 responses)  
Midwestern Baptist Theological Seminary (2 responses)  
Moravian Theological Seminary  
Mount St. Mary's College  
Mundelein College  
Naropa University (5 responses)  
Nashotah House Theological Seminary  
New Orleans Theological Seminary  
North Park Seminary  
Northeastern Seminary (2 responses)  
Notre Dame of Maryland  
Oblate School of Theology  
Pacific School of Religion (8 responses)  
Perkins School of Theology  
Pittsburgh Theological Seminary (3 responses)  
Presbyterian School of Christian Education (2 responses)  
Princeton Theological Seminary (12 responses)  
Reformed Theological Seminary  
Regent College (2 responses)  
Regent University Divinity School  
Rice University  
Robert Wesleyan College  
Saint Louis University  
Saint Mary's Seminary (2 responses)  
Saint Paul University (2 responses)  
San Francisco Theological Seminary (3 responses)  
Seabury Western Theological Seminary (2 responses)  
Seattle School of Theology  
Southeastern Baptist Theological (2 responses)  
Southern Baptist Theological Seminary (2 responses)  
Southwestern Seminary  
St. Mary's Seminary and Ecumenical Institute (3 responses)  
St. Michael's College

## 2015 AAR Survey Findings

St. Paul School of Theology  
Stanford University  
State University of New York, Buffalo  
Syracuse University (4 responses)  
Temple University  
The New Seminary  
Trinity College, Toronto  
Trinity Evangelical Divinity School (2 responses)  
Trinity Lutheran Seminary (3 responses)  
University of Amsterdam  
University of Iowa (7 responses)  
University of North Carolina, Chapel Hill  
University of North Carolina, Charlotte  
University of California, Berkeley Graduate Theological Union (9 responses)  
University of California, Riverside (2 responses)  
University of California , Santa Barbara (2 responses)  
University of Chicago Divinity School (19 responses)  
Union Presbyterian Seminary (4 responses)  
Union Theological Seminary (10 responses)  
United Theological Seminary (5 responses)  
University of Connecticut  
University of Denver  
University of Edinburgh, UK  
University of Florida  
University of Georgia  
University of Hawaii (2 responses)  
University of Iowa (24 responses)  
University of Judaism  
University of Minnesota  
University of Missouri (4 responses)  
University of Notre Dame (2 responses)  
University of Ottawa  
University of Vermont  
University of Washington (2 responses)  
University of Wisconsin  
Vanderbilt Divinity School (12 responses)  
Virginia Theological Seminary (3 responses)  
Wake Forest University (5 responses)  
Wartburg Theological Seminary (29 responses)  
Wesley Theological Seminary (5 responses)  
Western Michigan University (6 responses)  
Westminster Theological Seminary  
Weston School of Theology  
Wheaton College  
Wilfrid Laurier University  
Yale University Divinity School (13 responses)

2015 AAR Survey Findings

Education - Other

All Institutions

N = 1485

<i>Are you currently enrolled in a graduate program outside of religious studies?</i>	Yes	11.8%
	No	88.2%

*What degree(s) are you pursuing? (Check all that apply.)*

J.D.	11%
M.A.	28.3%
M.B.A.	4%
M.D.	2.9%
M.F.A.	2.3%
M.P.H.	2.9%
M.S.	7.5%
M.S.N.	0.6%
M.S.W.	4.6%
M.S.L.S.	1.7%
Ph.D.	20.2%
Other	20.2%

Note. Percentages may equal more than 100.0% because of multiple selections.

All Institutions

N = 1622

<i>Have you in the past pursued a degree outside of religious studies?</i>	Yes	42%
	No	58%

*What degree(s) did you earn? (Check all that apply.)*

J.D.	12.2%
M.A.	25.4%
M.B.A.	4%
M.D.	2%
M.F.A.	2.6%
M.P.H.	1.1%
M.S.	10.5%
M.S.N.	0.3%
M.S.W.	6.6%
M.S.L.S.	1.5%
Ph.D.	8.6%
Did not finish program.	10.6%
Other	23.3%

Note. Percentages may equal more than 100.0% because of multiple selections.

## 2015 AAR Survey Findings

### **Other Degrees:**

A.A. (5 responses)  
A.A.S. (2 responses)  
Accounting certificate  
Acting  
Adult Education (3 responses)  
Advanced Law Enforcement  
Agricultural Meteorology  
Architectural Technology  
Art Education  
Arts Administration  
Associate Degree (6 responses)  
B.A. (34 responses)  
B.ED (4 responses)  
B.S. (19 responses)  
BSN (3 responses)  
BSW  
California Credential K-8  
Cert. in Doc Media Study  
Certificate in Adventure  
Certificate of Completion  
Certificate of Social Work  
Clinical Counseling  
Clinical Herbalist  
Clinical Pastoral Education  
CLU, LUTCF, FIC  
College Student Personnel+7575:81  
Counseling (10 responses)  
CPE units  
Culinary Arts  
D.C.  
DDS  
D.Sc. environmental health  
DO (osteopathic med)  
Doctor of Ministry  
Doctorate in Public Admin  
Ed.D.  
Fast Track in ESE K-12  
Financial Studies Cert.  
Foreign Service  
Gerontology  
Global & International Ed  
Globalization & Int. Dev  
Grad Cert nonprofit mgmnt  
Grad Cert Public Admin  
Graduate Certificate  
Health administration  
Higher Education (3 responses)  
Historic Preservation  
Homeland Security

## 2015 AAR Survey Findings

Library Science (3 responses)  
Licensed Practical Nurse  
LL.B. (3 responses)  
LL.M. (3 responses)  
M. Ed. (38 responses)  
M.A.E. in Counseling  
M.A.M.F.T.  
M.A.T (7 responses)  
M.M.S. (Mast. Med. Stud.)  
M.P.A. (13 responses)  
M.Phil.  
Marriage & Family Therapy (2 responses)  
Massage Therapy  
Master Envir. Planning  
Master of Accountancy  
Master of Architecture  
Master of Forestry  
Master of Health Sciences  
Masters in Counseling  
Masters in Horticulture  
Masters in Humanities  
Masters of Family Therapy  
Medical Records Administration  
MHP  
MHUB  
MNM  
Naturopathic Doctor  
NC Teacher Certification  
Nonprofit Management  
OTD  
Paralegal  
Post-Bac Pre-Med  
PPS Credential  
Residency-Certification  
RN (2 responses)  
Software Engineering (2 responses)  
Software Testing  
Teacher Certification (7 responses)  
TESOL  
Veterinary Technology

**Currently Enrolled in Programs Outside of Religion**

*At what institution are you pursuing your degree(s)?*

American University of Antiqua College of Medicine  
Arizona State University  
Arkansas Tech  
Australian National University  
Ave Maria School of Law  
Boston College  
Bowling Green State University  
C. B. Jung Institute  
Capella University (3 responses)  
Catholic University  
Columbus School of Law, Champlain College (2 responses)  
Charleston School of Law  
College and University of Natural Health  
College of Charleston (2 responses)  
Columbia College  
Columbia University  
Colley Law School  
Cornell University  
California State University, Chico (2 responses)  
California State University, Dominguez Hills  
California State University, Fullerton (2 responses)  
California State University, Long Beach  
City University of New York, Graduate Center (3 responses)  
Dalhousie University  
DePaul University  
Drake University School of Law  
East Carolina University  
Eastern Illinois  
Emory University (2 responses)  
Florida Institute of Technology  
Florida International University (2 responses)  
George Fox University  
George Mason University  
George Washington University  
Georgetown University  
Illinois State University  
Indiana University (3 responses)  
Indiana University-Purdue University Indianapolis (2 responses)  
Kaplan University (2 responses)  
Lesley University  
Loyola University, Chicago (3 responses)  
McGill University (7 responses)

## 2015 AAR Survey Findings

Montana State University  
New Mexico State University  
Northeastern University  
Northwestern University  
Notre Dame University of Maryland  
Nova Southeastern University  
Ohio University  
Oklahoma State University (2 responses)  
Our Lady of the Holy Cross College  
Portland State University (2 responses)  
Queens University, Belfast  
Reach Institute  
Regis University, Denver  
Relay Graduate School of Education  
Robert Morris  
Rush University  
Saint Louis University  
Saint Mary's University of Minnesota  
San Jose State University  
North Seattle College  
Seattle Pacific University  
St. Petersburg College  
St. Ambrose University  
St. Joseph's University  
Stanford University  
Syracuse University  
The Citadel  
University of Alabama  
University of British Columbia (2 responses)  
University of California, Berkeley  
University of Maryland, Baltimore  
University of Colorado, Denver  
University of North Carolina, Charlotte (2 responses)  
University of Northern Iowa  
University of Kent, Canterbury, UK  
University of St. Augustine  
University College of London  
University of Baltimore  
University of California, Davis  
University of Denver (2 responses)  
University of Durham, UK (2 responses)  
University of Hawaii, Manoa  
University of Illinois (3 responses)  
University of Iowa (5 responses)  
University of Kansas  
University of Kentucky  
University of Maine

## 2015 AAR Survey Findings

University of Maryland  
University of Michigan  
University of Minnesota (5 responses)  
University of Missouri (3 responses)  
University of Montana  
University of New Mexico  
University of Ottawa  
University of Richmond  
University of San Diego (2 responses)  
University of South Carolina  
University of South Florida  
University of Stirling  
University of Tennessee  
University of Toronto (3 responses)  
University of Utah  
University of Westminster, London  
University of Windsor  
University of Wisconsin (2 responses)  
University of Texas  
Utah State  
Wake Tech Community College  
Washington University, St. Louis  
Wayne State University  
Wesleyan University

*What program(s) are you enrolled in at the above institution?*

Academically and Intellectually Gifted Certification  
Accounting (3 responses)  
Anthropology (4 responses)  
Biology  
Behavior Analyst  
Clinical Mental Health Counseling  
Clinical Psychology (4 responses)  
Community Health (2 responses)  
Computer Science (3 responses)  
Creative Writing (2 responses)  
Curatorial Practice in Performance  
Curriculum and Instruction (3 responses)  
Database Administration  
Dental  
Digital Humanities  
Early Childhood Education (4 responses)  
Education (3 responses)  
Educational Leadership and Administration (8 responses)  
English Common Law Program  
English Literature



## 2015 AAR Survey Findings

English as Second Language (2 responses)  
Environmental Policy (2 responses)  
Finance (2 responses)  
Forestry  
Global Governance  
History (5 responses)  
Holistic Health and Advanced Nutrition  
Human Computer Interaction  
Human Services  
Information Systems  
International Development Studies  
Law (13 responses)  
Japanese Literature  
Journalism (2 responses)  
Jungian Analysis  
Leisure Studies  
Library and Information Science (5 responses)  
Mathematics  
Medicine (3 responses)  
Middle Eastern Studies  
Music  
Nursing (1 response)  
Occupational Therapy  
Philanthropy  
Philosophy (3 responses)  
Political Science (3 responses)  
Psychiatry (2 responses)  
Psychology (5 responses)  
Public Health (3 responses)  
Public Relations  
Real Estate  
School counseling (2 responses)  
Speech Pathology  
Social Work (8 responses)  
Special Needs Education  
Theatre Management and Producing  
Urban Planning  
Veterinary Medicine  
Visual Communication, Photojournalism

### **Previously Enrolled in Programs Outside of Religion**

*At what institution did you pursue your degree(s)?*

Academy of Art University  
Ackerman Institute Family  
Adelphi University

## 2015 AAR Survey Findings

Alfred State  
American Institute of Massage  
American University (4 responses)  
Antioch University  
Appalachian State University (2 responses)  
Aquinas College (2 responses)  
Arizona State University (5 responses)  
Arkansas Tech University  
Ashworth College  
Aurora University  
Avalon Institute  
Bakersfield Junior College  
Ball State University  
Bard College  
Baylor University  
Bellevue University  
Bemidji State University  
Ben-Gurion University  
Black Hills State University  
Boston College (2 responses)  
Boston University (4 responses)  
Brooklyn College  
Brown University (3 responses)  
California Institute of Integral Studies  
California School of Professional Psychology  
California State University, Chico (3 responses)  
California State University, Fullerton (6 responses)  
California State University, Northridge  
California State University, San Bernardino  
California Institute of the Arts (2 responses)  
Cambridge College  
Cambridge University  
Campbell Law School  
Canisius College (5 responses)  
Cardozo School of Law  
Carteret Community College  
Case Western Reserve University  
Catawba College  
Catholic University (3 responses)  
Catonsville Community College  
Canadian College of Naturopathic Medicine  
Central European University  
Centre for Human Ecology  
Claremont Graduate University (2 responses)  
Chapman University  
Charleston School of Law  
City University of New York

## 2015 AAR Survey Findings

City University, London  
Clark Atlanta University  
Cleveland Marshall College of Law  
College of Charleston (3 responses)  
Colorado Christian University  
Colorado State University (2 responses)  
Columbia College  
Columbia University (9 responses)  
Concordia University (3 responses)  
Cornell University (2 responses)  
Cottey College  
Creighton University  
Cumberland School of Law  
D'Youville College  
Dawson College  
DePaul University (3 responses)  
DeSales University  
Dominican University  
Drake University (4 responses)  
Drexel University  
Duke University  
East Carolina University (6 responses)  
Edinburgh University  
Eastern Illinois University  
Emerson College  
Emory University  
Evangelical Seminary  
Florida Atlanta University  
Florida International University (4 responses)  
Florida Gulf Coast University  
Fordham University  
Fort Lewis College  
French Culinary Institute (2 responses)  
Florida State University  
Full Sail University  
George Mason University  
George Washington University (2 responses)  
Georgetown University (6 responses)  
Georgia Southern University  
Georgia State University (3 responses)  
Goddard College (2 responses)  
Gordon Conwell Theological Seminary  
Gratz College  
Hamline University (3 responses)  
Hartford Community College  
Harvard University (7 responses)  
Hebrew Union College (2 responses)

## 2015 AAR Survey Findings

Hofstra University  
Hunter College (2 responses)  
Indiana University (5 responses)  
Indiana University Purdue University Indianapolis  
Iowa State University (2 responses)  
Jackson State Community  
Johns Hopkins University (3 responses)  
Johnson State College  
Kalamazoo College  
Kaplan University  
King's College London  
La Salle University  
La Trobe University, Australia  
Laval University  
Lehigh University  
Lewis & Clark College  
Liberty University  
Loyola University (5 responses)  
Lynchburg College  
Martin Community College  
McGeorge School of Law  
McGill University (4 responses)  
Medical College of Wisconsin  
Mercer University  
Miami Dade Community College  
Miami University  
Michigan State University (4 responses)  
The New School  
Milwaukee Area Technical College  
Monterey Institute of International Studies (2 responses)  
Moorhead State University  
Mount Mary University  
Murray State University  
Medical University of South Carolina  
Naropa Graduate School  
National University (2 responses)  
North Carolina State University (2 responses)  
New England College of Business  
New England School of Law  
New Mexico Highlands University  
New York University (3 responses)  
North Carolina Central University (2 responses)  
North Georgia College  
Northeastern University (4 responses)  
Northern Arizona University  
Northwestern College (2 responses)  
Nova Southeastern University (4 responses)

## 2015 AAR Survey Findings

Oakland University  
Ohio University  
Oklahoma University  
Old Dominion University  
Pacific Lutheran University  
Pacific Oaks American College  
Palmer College of Chiropractic  
Parkland College  
Pennsylvania State  
Pepperdine University  
Piedmont Technical College  
Portland State University  
Princeton University (2 responses)  
Queen's University (3 responses)  
Regent Law University (2 responses)  
Roberts Wesleyan College  
Ryerson University  
Saint Georges University  
Saint Louis University  
Saint Mary's College (2 responses)  
Saint Mary's University  
Saint Michael's College (2 responses)  
Salem State University  
San Diego State University  
San Jose State University (2 responses)  
Santa Clara School of Law  
Savannah College of Art and Design (2 responses)  
San Diego State University (6 responses)  
Seattle Pacific University  
Simmons College  
SIT Graduate Institute  
South Dakota State University  
Southern Illinois at Carbondale  
Sophia University, Tokyo  
Southern Connecticut State University  
Southwestern Law School  
Springfield College  
St. John's University  
St. Thomas University (4 responses)  
State University of New York, Albany  
State University of New York, Buffalo  
Suffolk University  
Sussex County Community College  
Syracuse University (3 responses)  
Temple University (3 responses)  
Texas A&M University  
Texas Christian University

## 2015 AAR Survey Findings

The Citadel  
The New School (3 responses)  
The Wright Institute  
Towson University  
Trinity Graduate School  
Truman State University (4 responses)  
Tulane University (2 responses)  
University of Bradford  
University of California, Berkeley (3 responses)  
University of California, Irvine  
University of California, Riverside  
University of Cambridge  
University of Central Florida  
University of Chicago (5 responses)  
University of Cincinnati  
University College Cork  
University of Colorado (4 responses)  
University of Connecticut (2 responses)  
University of Copenhagen  
University of Denver (2 responses)  
University of Detroit Mercy  
University of Florida  
University of Georgia  
University of Hawaii  
University of Idaho  
University of Illinois (3 responses)  
University of Iowa (30 responses)  
University of Kansas (2 responses)  
University of Louisville (3 responses)  
University of Maine (2 responses)  
University of Maryland (2 responses)  
University of Memphis  
University of Miami (4 responses)  
University of Michigan (11 responses)  
University of Minnesota (8 responses)  
University of Missouri (16 responses)  
University of Montana  
University of Nebraska (2 responses)  
University of New Hampshire  
University of New Mexico (3 responses)  
University of North Carolina, Chapel Hill (5 responses)  
University of North Carolina, Charlotte (4 responses)  
University of North Carolina, Greensboro (2 responses)  
University of North Carolina, Wilmington  
University of North Dakota  
University of Northern Colorado (2 responses)  
University of Northern Iowa (3 responses)

## 2015 AAR Survey Findings

University of Notre Dame  
University of Oklahoma  
University of Oregon (2 responses)  
University of Ottawa  
University of Oxford  
University of Pennsylvania (3 responses)  
University of Phoenix (4 responses)  
University of Pittsburg (2 responses)  
University of Richmond  
University of Rochester  
University of Saskatchewan  
University of South Carolina (3 responses)  
University of South Florida  
University of Southern Mississippi  
University of St. Joseph  
University of Tennessee  
University of Texas (5 responses)  
University of Texas, Pan American  
University of Toledo  
University of Toronto (9 responses)  
University of Vermont (5 responses)  
University of Virginia (4 responses)  
University of Washington (6 responses)  
University of Wisconsin  
Universite de Montreal  
Utah State University (3 responses)  
Vanderbilt University  
Vermont College  
Vermont Law School  
Villanova University (2 responses)  
Virginia Commonwealth University  
Wake Technical College  
Walden University (2 responses)  
Washburn University  
Washington and Lee University  
Washington University, St. Louis (8 responses)  
Wayne State University (3 responses)  
West Chester University  
Western Carolina University  
Western Connecticut University  
Western Governors University  
Western Kentucky University  
Western Michigan University (11 responses)  
Western State College  
Willamette University  
William Woods University  
Windsor Law School

## 2015 AAR Survey Findings

Yale School of forestry  
Yale University (2 responses)  
York University



## 2015 AAR Survey Findings

### All Institutions

N = 1656

<b>Gender</b>	Female	55.8%
	Male	44.2%
<b>Ethnicity/Race</b>	Amer. Indian/Alaska Native	0.4%
	Asian	2.8%
	Black	1.9%
	Hispanic - Latino(a)	2.6%
	Pacific Islander	0.1%
	White	89.5%
	Two or more	2.6%

*In what year did you receive your undergraduate degree in religious studies?*

### All Institutions

N = 1633

Before 1970	6.9%
1970-1989	19.1%
1990-1999	15.7%
2000-2004	16.4%
2005-2009	23.8%
2010-2013	18.1%

**The following institutions participated in the 2014 administration of the AAR Survey:**

Alma College  
Bard College  
Barton College  
Butler University  
California State University, Chico  
California State University, Fullerton  
Canisius College  
Catawba College  
Clark Atlanta University  
College of Charleston  
East Carolina University  
Eckerd College  
Florida International University  
High Point University  
Houghton College  
Indiana University of Pennsylvania  
Kalamazoo College  
Lake Forest College  
La Salle University  
Maryville College  
McGill University  
Notre Dame of Maryland University  
San Diego State University  
Truman State University  
University of Denver  
University of Evansville  
University of Iowa  
University of Northern Iowa  
University of Minnesota  
University of Missouri  
University of Vermont  
Utah State University  
Western Michigan University  
Wartburg College